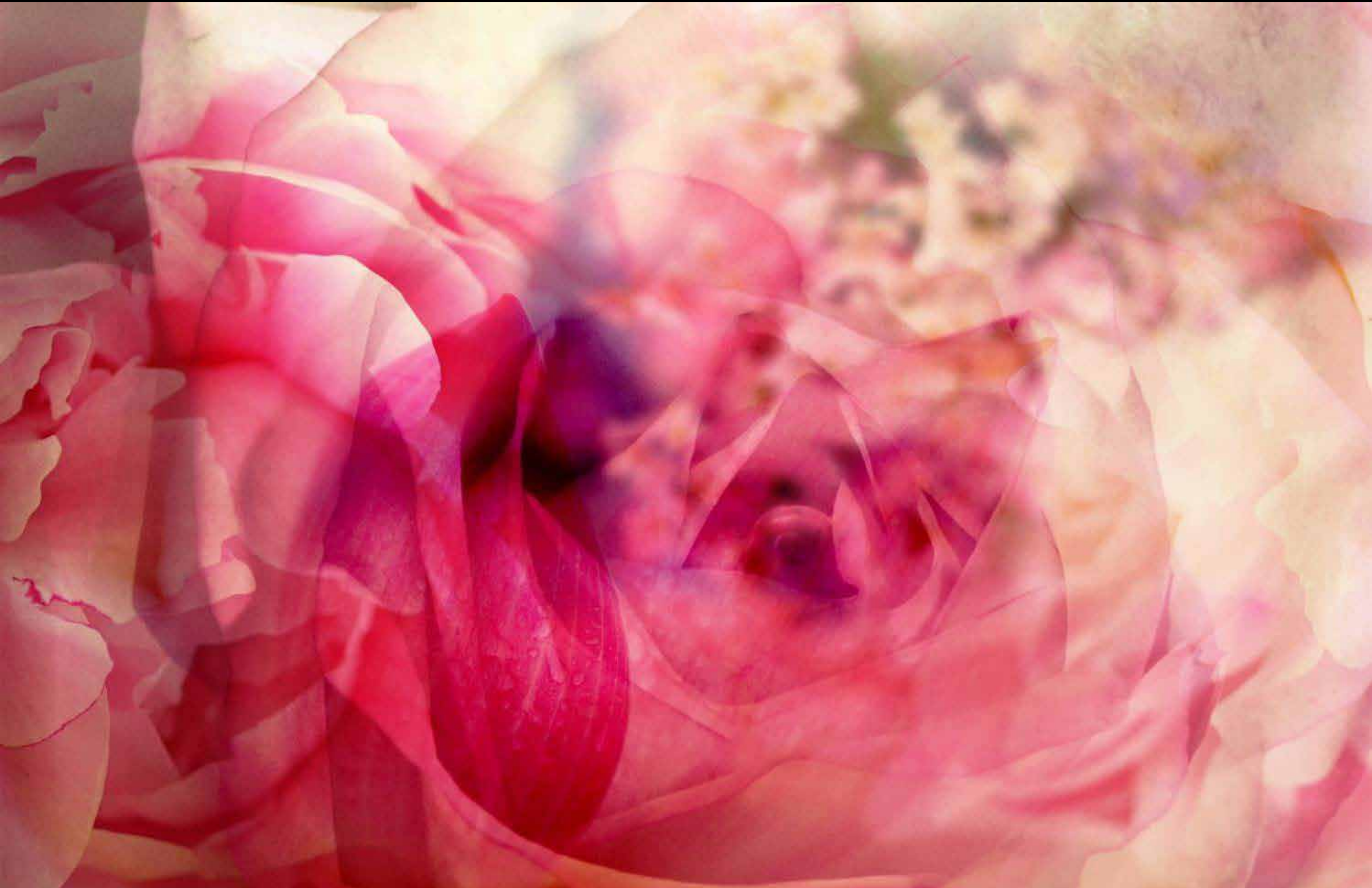


# Demo Formulas

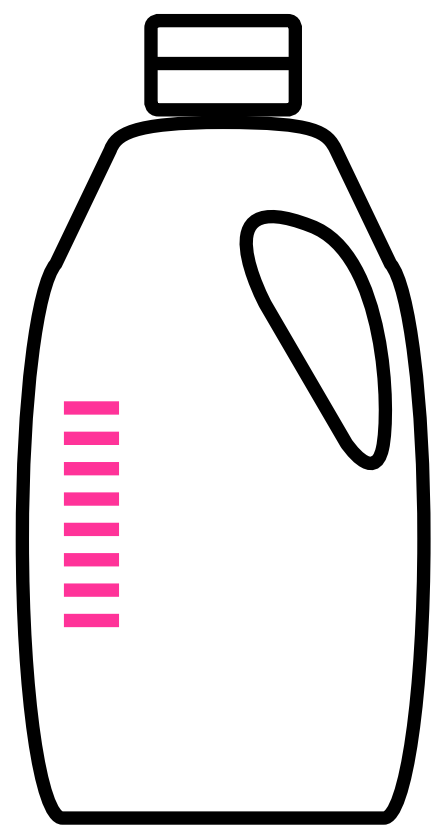
## Rosyrane Super

Givaudan

engage your senses



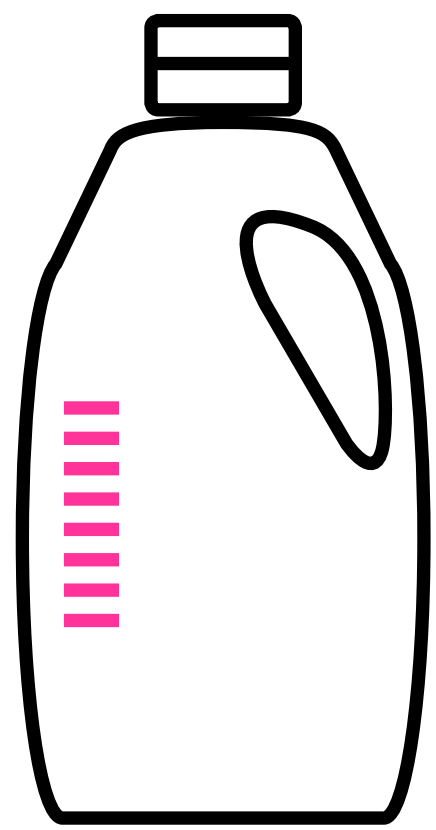
# Demo Formulas



## White Moon for Liquid Detergent @ 2%

	-	+
⊕ <b>Ambrofix</b>	<b>1.0</b>	
Aldehyde C 11 Undecylenic	2.0	
Aldehyde C 12 MNA Pur	2.0	
⊕ Dimetol	2.0	
⊕ <b>Dupical</b>	<b>2.0</b>	
⊕ <b>Gyrane</b>	<b>2.0</b>	
⊕ <b>Herboxane</b>	<b>2.0</b>	
Hexenol-3-Cis	2.0	
Indole Pure	2.0	
⊕ <b>Nectaryl</b>	<b>2.0</b>	
Ylang Base	3.0	
Geranium Oil Egypt	4.0	
⊕ <b>Methyl Laitone 10%/TEC</b>	<b>4.0</b>	
Phenyl Ethyl Acetate	5.0	
⊕ Isoraldeine 95	5.0	
⊕ <b>Javanol @10%</b>	<b>5.0</b>	
Aldehyde C 12 Lauric	15.0	
Coumarin Pure	15.0	
Lavandin Grosso Oil France	15.0	
⊕ <b>Cyclamen Aldehyde Extra</b>	<b>25.0</b>	
Hedione	25.0	
⊕ Benzyl Salicylate	25.0	
Dihydro Myrcenol	30.0	
Galaxolide	50.0	
Benzyl Acetate	65.0	
Linalyl Acetate	70.0	
P T Butyl Cyclohexyl Acetate	75.0	
Geraniol 980	75.0	
Terpineol Pure	75.0	
Phenyl Ethyl Alcohol	100.0	
Citronellol	100.0	
Linalool	125.0	
⊕ <b>Rosyrane Super @10%</b>	<b>0.0</b>	<b>4.0</b>
Methyl-3-Methoxy-3-Butanol	70.0	66.0
TOTAL	1000.0	1000.0

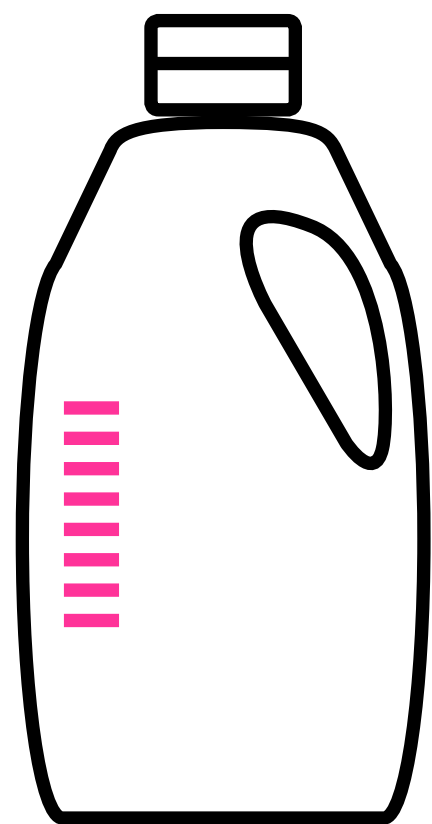
# Demo Formulas



## Diamond River for Liquid Detergent @ 2%

	-	+
Patchouli Oil Ironfree Indonesia	0.2	
Hexenyl-3-Cis Acetate	0.5	
Hexenol-3-Cis	0.5	
⊕ Manzanate	<b>0.5</b>	
⊕ <b>Methyl Laitone 10%/TEC</b>	<b>0.5</b>	
⊕ <b>Cosmone</b>	<b>1.0</b>	
⊕ <b>Lemonile</b>	1.0	
Rose Oxide	1.0	
Dipropylene Glycol	1.8	
Hexyl Acetate	2.0	
Benzaldehyde	2.0	
Damascenone @10%	2.0	
Ethyl Vanillin @10%	2.0	
Isocyclocitral	2.0	
⊕ <b>Pelargene</b>	<b>2.0</b>	
Citronellyl Acetate	3.0	
Eugenol Pure	3.0	
Benzyl Acetate	5.0	
⊕ <b>Freskomenthe</b>	<b>5.0</b>	
⊕ Ionone Beta	5.0	
⊕ Isoraldeine 70	5.0	
Jasmacyclene	5.0	
Neryl Acetate	10.0	
Diphenyl Oxide	10.0	
Galaxolide	10.0	
Dimethyl Octanol	10.0	
Rose Crystals	10.0	
Geranyl Acetate	15.0	
Linalool	25.0	
Phenyl Ethyl Acetate	30.0	
Geraniol Intermediate 60	70.0	
Terpineol Pure	75.0	
Citronellol	150.0	
Phenyl Ethyl Alcohol	225.0	
⊕ <b>Rosyrane Super</b>	<b>0.0</b>	<b>2.0</b>
Methyl-3-Methoxy-3-Butanol	310.0	308.0
TOTAL	1000.0	1000.0

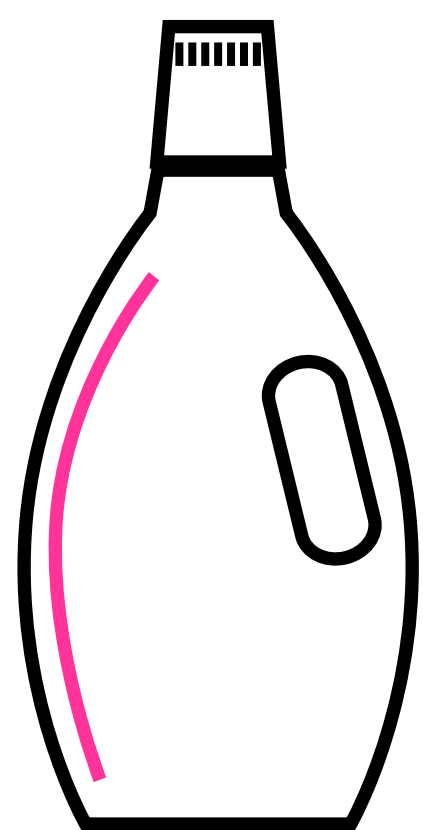
# Demo Formulas



## Waterfall for Liquid Detergent @ 2%

	-	+
• <b>Limetol</b>	1.5	
• <b>Toscanol</b>	1.5	
Methyl Benzoate	2.0	
• <b>Ethyl Methyl-2-Butyrate</b>	2.0	
Aldehyde C 11 Undecylenic	4.0	
Aldehyde C 12 Lauric	4.0	
• <b>Givescone</b>	5.0	
Patchouli Oil Colorless Indonesia	5.0	
Orange Terpenes Distilled	10.0	
Verdox	12.0	
Cedryl Methyl Ether	12.0	
Coumarin Pure	12.0	
• Nectaryl	12.0	
• Silvanone Supra	12.0	
Benzyl Acetate	25.0	
• <b>Cyclamen Aldehyde Extra</b>	25.0	
Para Butyl Cyclohexanol	25.0	
• Isoraldeine 70	40.0	
Terpineol Pure	40.0	
P T Butyl Cyclohexyl Acetate	60.0	
Phenyl Ethyl Alcohol	65.0	
Citronellol	100.0	
Hexyl Cinnamic Aldehyde	125.0	
Linalool	225.0	
• <b>Rosyrane Super @10%</b>	<b>0.0</b>	<b>2.0</b>
Methyl-3-Methoxy-3-Butanol	175.0	173.0
TOTAL	1000.0	1000.0

# Demo Formulas



## Rhubarb Blossom for Fabric Conditioner @ 1%

	-	+
⊖ <b>Lemonile</b>	1.0	
⊖ Butyl Quinoline Secondary @10%	2.0	
⊖ <b>Ambrofix</b>	5.0	
Heliotropine	5.0	
⊖ <b>Paradisamide</b>	5.0	
Phenyl Ethyl Phenyl Acetate	5.0	
Raspberry Ketone	5.0	
⊖ <b>Rhubafuran</b>	5.0	
⊖ <b>Javanol</b>	6.0	
⊖ <b>Ebanol</b>	7.0	
⊖ <b>Givescone</b>	10.0	
⊖ <b>Methyl Pamplemousse</b>	10.0	
⊖ <b>Nectaryl</b>	10.0	
⊖ <b>Pharaone 10%/DPG</b>	10.0	
⊖ <b>Spirogalbanone Pure @10%</b>	10.0	
⊖ Myraldene	12.0	
Ethyl Vanillin	20.0	
⊖ Hexyl Salicylate	30.0	
⊖ Mefrosol	70.0	
Citronellol	80.0	
Phenyl Ethyl Alcohol	100.0	
Galaxolide	190.0	
Benzyl Acetate	200.0	
⊖ <b>Peonile</b>	200.0	
⊖ <b>Rosyrane Super @10%</b>	0.0	2.0
Dipropylene Glycol	2.0	0.0
TOTAL	1000.0	1000.0

