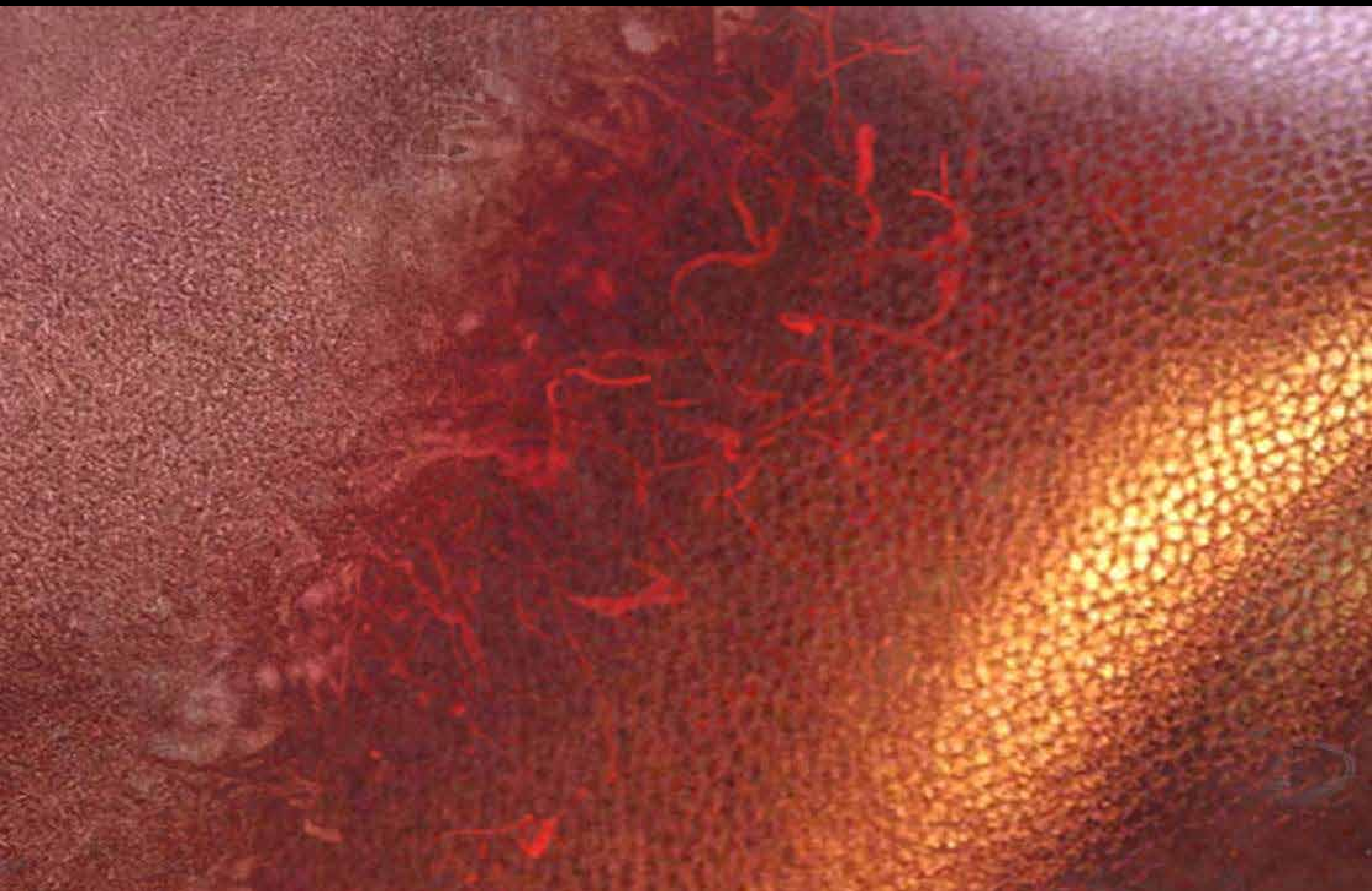


Demo Formulas

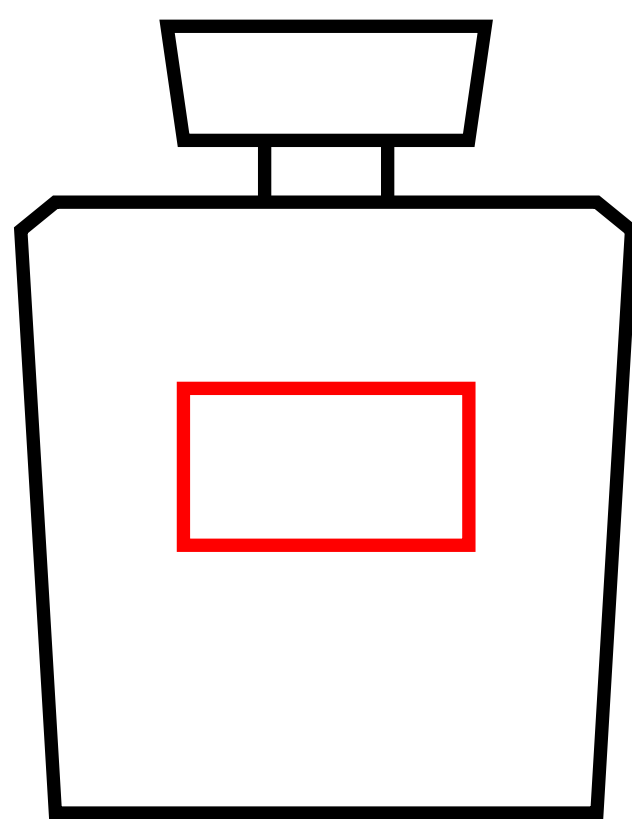
Safraleine[®]

Givaudan

engage your senses



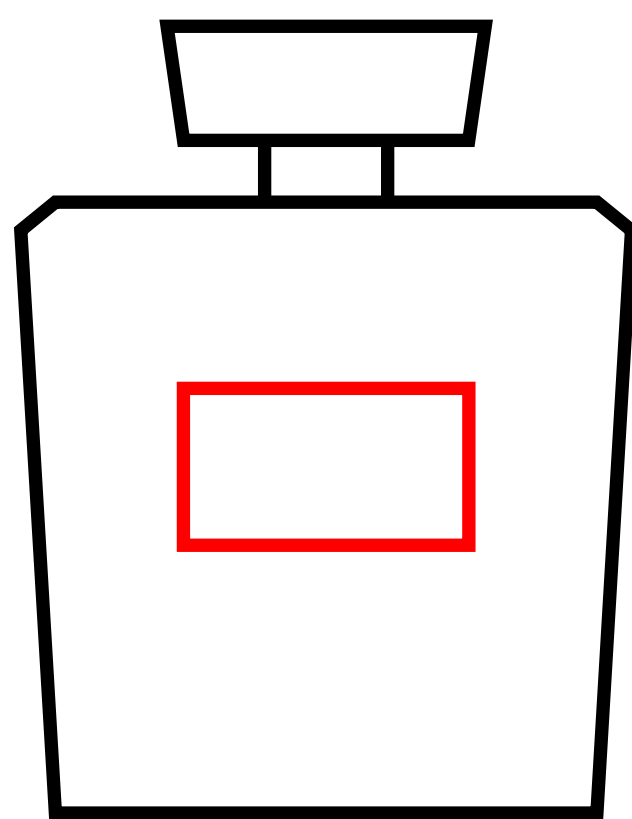
Demo Formulas



Suede Petals for Unisex's Cologne @ 10% Alc.90°

	-	+
⊖ Karanal	5.0	
⊖ Syringa Aldehyde	7.0	
⊖ Isobutavan	10.0	
Pepper Black Oil Madagascar	10.0	
⊖ Cyclamen Aldehyde Extra	13.0	
⊖ Gardamide	15.0	
⊖ Mefranal @10%	15.0	
Orange Oil Brazil	15.0	
⊖ Silvanone Supra	15.0	
Cedar Wood Oil Texas Fraction	20.0	
⊖ Oxyoctaline Formate	20.0	
⊖ Kephalis	20.0	
Patchouli Oil Ironfree	20.0	
Hexenyl-3-Cis Benzoate	25.0	
Hexenol-3-Cis @10%	25.0	
Indole Pure @10%	25.0	
Phenyl Propyl Alcohol	30.0	
Prunolide @10%	35.0	
Guaiyl Acetate	40.0	
⊖ Cosmone	55.0	
Hedione	75.0	
⊖ Ethyl Linalool	250.0	
⊖ Safraleine	0.0	40.0
Dipropylene Glycol	255.0	215.0
TOTAL	1000.0	1000.0

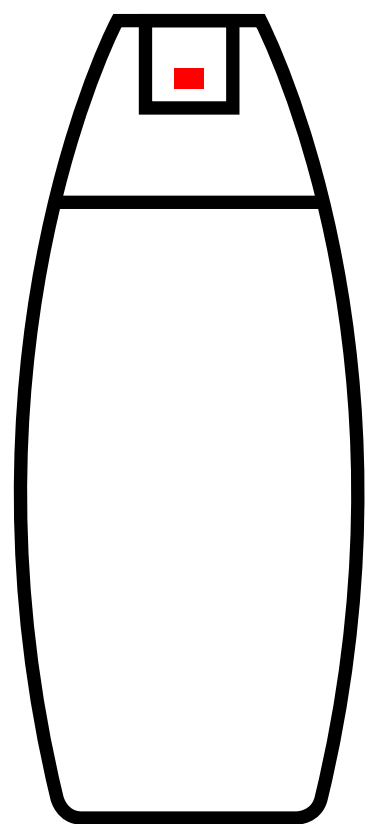
Demo Formulas



Rosa Gothica for Unisex's Cologne @ 5% Alc.90°

	-	+
Ethyl Maltol	1.0	
⊕ Methyl Laitone 10%/DPG	1.0	
Birch Tar Oil @10%	3.0	
Geranium Oil Egypt	3.0	
Rose Oxide	3.0	
Cedar Leaf Oil	4.0	
Damascone Delta	5.0	
⊕ Javanol	5.0	
Citronellol	10.0	
Coriander Seeds Oil	10.0	
Coumarin Pure	10.0	
⊕ Ebanol	10.0	
Olibanum Hyperessence	10.0	
Heliotropine	10.0	
Pepper Black Oil Madagascar	10.0	
Schinus Molle Oil Pure	10.0	
Eugenol Pure	25.0	
Vanillin	25.0	
Ethyl Vanillin	30.0	
Linalool	30.0	
⊕ Sandalore	35.0	
Patchouli Oil Ironfree	60.0	
⊕ Benzyl Salicylate	75.0	
⊕ Rose Givco 217	150.0	
Hedione	225.0	
Iso E Super	225.0	
⊕ Safraleine	0.0	15.0
Dipropylene Glycol	15.0	0.0
TOTAL	1000.0	1000.0

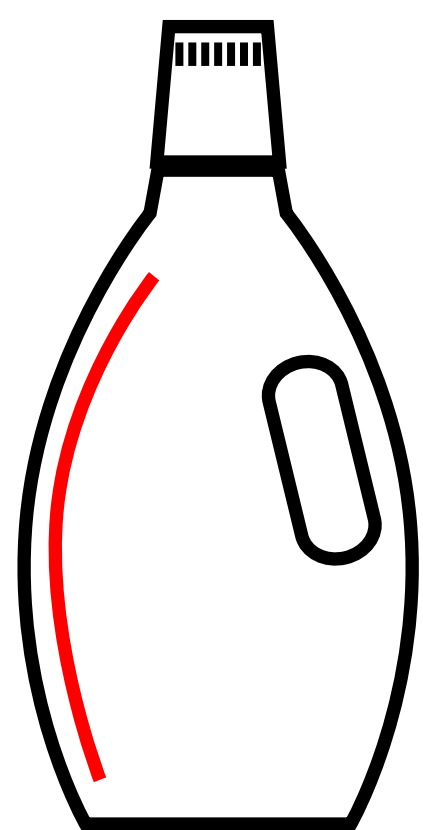
Demo Formulas



Fée des Lilas for Shower Gel @ 1%

	-	+
Acetal R	1.0	
Phenyl Acetaldehyde 50% @10%	1.0	
☉ Methyl Anthranilate Extra	2.0	
☉ Florhydral	2.0	
Hexenol-3-Cis	2.0	
☉ Pharaone 10%/DPG	2.0	
☉ Stemone	2.0	
☉ Undecavertol	3.0	
☉ Methyl Diantilis	4.0	
☉ Homofuronol 20%/TEC	5.0	
☉ Silvanone Supra	7.0	
☉ Toscanol	7.0	
☉ Levistamel 25%/TEC	8.0	
Anisic Aldehyde	10.0	
Indole Pure @10%	10.0	
☉ Berryflor	20.0	
☉ Peonile	30.0	
Terpineol Pure	30.0	
Benzyl Acetate	35.0	
☉ Ionone Beta	40.0	
☉ Florosa	60.0	
Cinnamyl Alcohol	65.0	
Phenyl Ethyl Alcohol	140.0	
Linalool	153.0	
Hedione	175.0	
☉ Safraleine	0.0	3.0
Dipropylene Glycol	190.0	187.0
TOTAL	1000.0	1000.0

Demo Formulas



Guilin for Fabric Conditioner @ 1%

	-	+
Phenyl Acetaldehyde 50%	1.0	
Damascenone	2.0	
Allyl Caproate	3.0	
⊕ Cyclal C	3.0	
Hexenol-3-Cis	3.0	
Indole Pure @10%	3.0	
⊕ Labienoxime 10%/IPM-TEC @10%	3.0	
⊕ Azarbre	5.0	
⊕ Jasmatone	5.0	
Methyl Cinnamate	7.0	
Amandolene Stab G 25703	8.0	
Dimethyl Benzyl Carbinyl Butyrate	10.0	
⊕ Javanol @10%	10.0	
⊕ Methyl Octyne Carbonate @10%	10.0	
Hexyl Acetate	15.0	
⊕ Nectaryl	15.0	
⊕ Geranodyle	20.0	
Dimethyl Benzyl Carbinyl Acetate	30.0	
⊕ Ionone Beta	30.0	
Terpenyl Acetate	40.0	
Decalactone Gamma	40.0	
Iso E Super	40.0	
Benzyl Acetate	60.0	
Citronellol	60.0	
Hedione	60.0	
⊕ Jasmacyclene	60.0	
Orange Oil Brazil	60.0	
Peach Pure	60.0	
Galaxolide	100.0	
Linalool	110.0	
Hexyl Cinnamic Aldehyde	120.0	
⊕ Safraleine	0.0	7.0
Dipropylene Glycol	7.0	0.0
TOTAL	1000.0	1000.0

